

SCANNER DRIVER INSTALLATION

Note: Ensure the scanner is not plugged into the tower & Windows User needs to have Administrative Rights.

1. Click on Download Scanner Drivers
2. Select appropriate drivers & click on “Download”
3. You’ll be given the option to Open, Save or Cancel; Click on drop down arrow by Save and select Save As and save to your Desktop
4. Double click or right click on Compressed (zipped) scanner driver folder and extract the drivers
5. If you double click to extract the drivers, an additional window will open
6. If you right click to extract the drivers, extract them to your desktop
7. Double click on the scanner driver folder; Double click on RangerFor(Your Scanner Name) icon below:

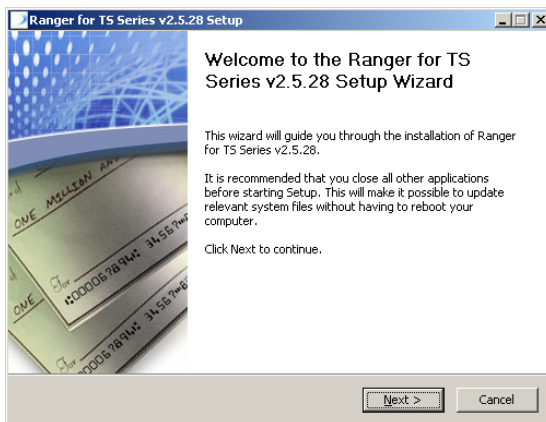


RangerForDigitalCheck-TSSeries_v4.2.15

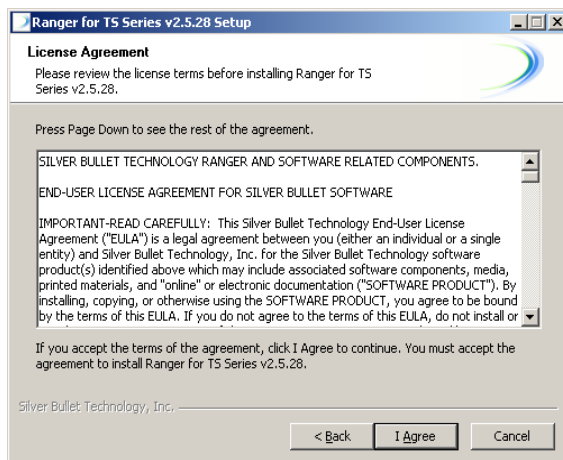


setup.dat

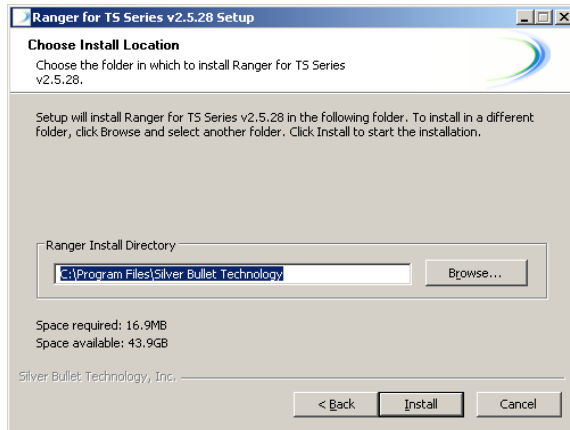
8. Click “Next” below:



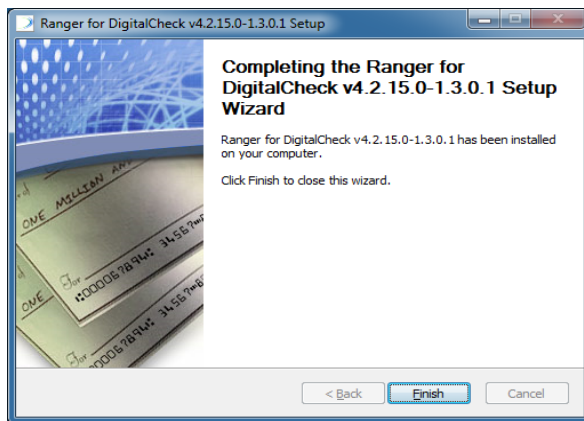
9. Click “I Agree” below:



10. Click **“Install”** below:



11. Click **“Finish”** below:



12. There are browser settings that need to be updated before using the scanner. Please call the **Business Services Department** for further instruction: 309-284-1293